

ASPECTS REGARDING THE TECHNICAL EXPERTISE OF ELECTRIC EQUIPMENT CABIN OF THE COAL MINING MACHINE

Professor PhD Eng. Marius Liviu CÎRȚÎNĂ, University „Constantin Brancusi” from Targu-Jiu, ROMANIA, cirtinaliviu@gmail.com,

Lecturer PhD Eng. Alin STĂNCIOIU, University „Constantin Brancusi” from Targu-Jiu, ROMANIA, stancioiualin09@gmail.com

Lecturer PhD Eng. Constanța RĂDULESCU University „Constantin Brancusi” from Targu-Jiu, ROMANIA, rpc10gj@gmail.com

Abstract: *In this paper we presents technical condition, how it looks and which deffects are electrical cabin of coal mining machine after technical expertise made it. The rehabilitation to which electric cabinets will be subjected will be done by performing the intervention works that will restore both the structural part and the functional part in the normal operating parameters. The paper presents the failures found in electrical cabinets as well as proposed solutions for their repair.*

Keywords: equipment, coal, modernization, interventions.

1. DESCRIPTION

There are electrical cabinets located on the side of the lift mechanism platform, around it on three sides with access on the balancing arm and placed on transverse beams. Seating beams constitute and support the floor of the cabins and they pass under the top platform.

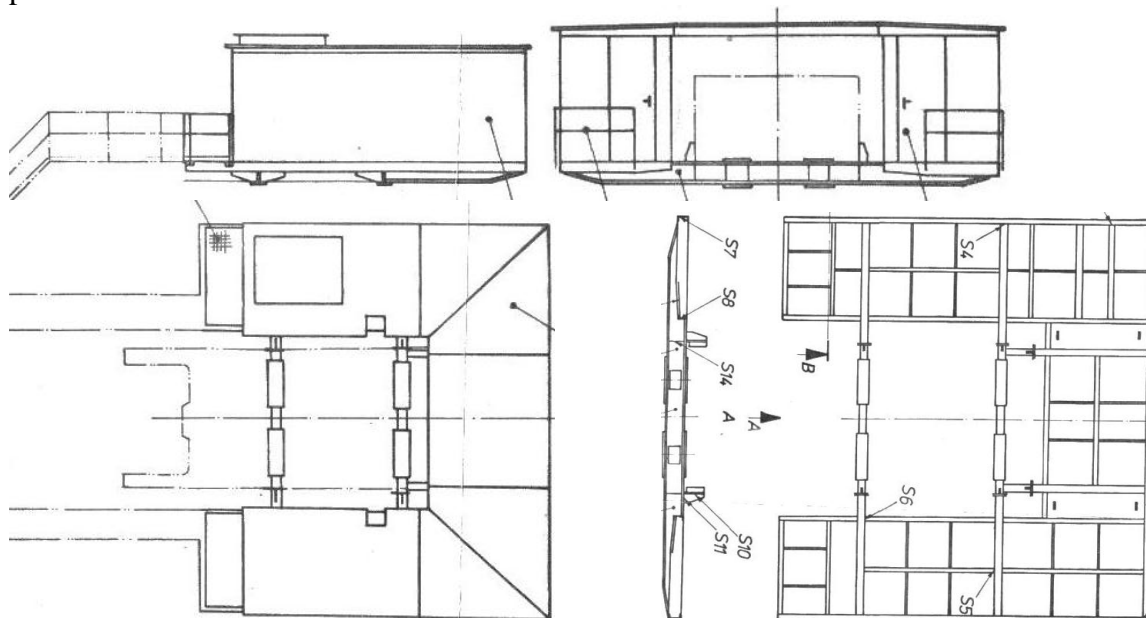


Fig.1. Drawing electrical cabins and supporting beams



Right Cabin







Left Cabin



Support beams and cabin floor

Fig.2 Pictures with view from the ground

2. PROPOSAL AND REMEDIATIONS

Pictues with deeffects- Observations	Proposal And Remediations
	<p>The side walls and the access doors in the electrical cabins have degraded paint surfaces and rusting through the cover sheet.</p> <p>Degradation is particularly noticeable when joining the wall with the floor, where it has accumulated and charcoal dust.</p> <p>It is necessary to replace degraded portions, clean and protect corrosion.</p>
	<p>Degradation is visible on both sides of the cabin.</p> <p>The corrosion phenomenon also occurs when joining the walls with the roof, visible and on top of the roof.</p>
	<p>It is imperative that an anti-corrosive coating is applied during the repair.</p>
 <p style="text-align: right;"><i>Face</i></p>	<p>The fastening of the electric booths on both the front and rear side of the beam, as well as the precipitation water with deposits of coal dust, came to the right.</p> <p>It is recommended to repair the fastening or, as the case may be,</p>

		<p>to clean and protect the corrosion protection.</p>
		<p>The ceiling of rusty and deformed booths as a result of supporting by placing various pieces on it. Cut-off but leaky cuts on the ceiling that allowed water to penetrate. The non-sealed welding between the structure of the electrical house and the roof allowed the penetration of water. The appearance of water through the perforation of the roof will be repaired.</p>
		<p>Extended roof areas with rust that can perforate. Same phenomena on the floor and / or the joining between the floor and the walls. The cabin structure is not affected. The high voltage side will be checked during repair (access was not possible-HSW)</p>

3.CONCLUSIONS

- 1) Emergency roof repair to stop water from precipitation reaching the medium voltage (6 kV) electrical installations.
- 2) Purification, rust and application of corrosion protection after complete sealing.
- 3) Apply a sealing layer on the roof or replace it with one of the Sandwich sealant and heat insulating.
- 4) Making locks to allow the doors a good seal, which prevents water from entering in cabins.

4. REFERENCES

1. Cîrîţnă Liviu Marius, Stăncioiu A., Rădulescu C - Aspects regarding expertise of the horizontalization device of command cabine of the coal mining machine - Confereng 2018, Analele Universitatii „Constantin Brancusi,, din Targu-Jiu, Nr.1/2018, pg.111-114, ISSN 1842 – 4856 - http://www.utgjiu.ro/rev_ing/pdf/2018-2/18_LMC~1.pdf
2. Cîrîţnă Liviu Marius, Rădulescu C., Stăncioiu - Aspects regarding expertise the mechanism of riding of elinde from the coal extraction machine A- Confereng 2018, Analele Universitatii „Constantin Brancusi,, din Targu-Jiu, Nr.1/2018, pg.115-118, ISSN 1842 – 4856 - http://www.utgjiu.ro/rev_ing/pdf/2018-2/19_LMC~1.pdf
3. Rădulescu C., Cîrîţnă L.M., Stăncioiu – Aspects regarding the expertise of lifting-descent mechanism platform of a coal extraction machine – Part I - Confereng 2018, Analele Universitatii „Constantin Brancusi,, din Targu-Jiu, Nr.1/2018, pg.149-152, ISSN 1842 – 4856 - http://www.utgjiu.ro/rev_ing/pdf/2018-2/26_CRA~1.pdf
4. Rădulescu C., Cîrîţnă L.M., Stăncioiu – Aspects regarding the expertise of lifting-descent mechanism platform of a coal extraction machine – Part II - Confereng 2018, Analele Universitatii „Constantin Brancusi,, din Targu-Jiu, Nr.1/2018, pg.153-156, ISSN 1842 – 4856 - http://www.utgjiu.ro/rev_ing/pdf/2018-2/27_CRA~1.pdf
5. Stăncioiu A., Cîrîţnă L.M., Rădulescu C. ASPECTS RELATING TO EXPERTISE OF THE MAST COAL MINING MACHINES – THE FIRST PART -- Confereng 2018, Analele Universitatii „Constantin Brancusi,, din Targu-Jiu, Nr.1/2018, pg.167-170, ISSN 1842 – 4856 - http://www.utgjiu.ro/rev_ing/pdf/2018-2/30_AST~1.pdf
6. Stăncioiu A., Cîrîţnă L.M., Rădulescu C. ASPECTS RELATING TO EXPERTISE OF THE MAST COAL MINING MACHINES – THE FIRST PART -- Confereng 2018, Analele Universitatii „Constantin Brancusi,, din Targu-Jiu, Nr.1/2018, pg.171-174, ISSN 1842 – 4856 - http://www.utgjiu.ro/rev_ing/pdf/2018-2/30_AST~1.pdf
7. Stăncioiu,A., Nioata A., Rehabilitation of M4A coal extraction machine - Analele Universităţii „Constantin Brâncuşi,, Tg-Jiu, pg.56-59, Nr.3, nov. 2017, Editura Academica Brancusi, ISSN1842-4856.
8. Kuznetov, V. S., Ponomarev, V. A. – Universalnovo-sbornie prisposoblenia. Moskva, Maşino-stroenie, 1984.
9. Lange, K., – Lehrbuch der Umformtechnik. Berlin, Springer-Verlag, 1985.
10. Stăncioiu,A., Şontea, S., -Studies/investigations cocerning the durability of the nitrided cutting tools within the tehnological process of the punching/stamping, 02-04 september 2002, Vrnjacka Banja, Yugoslavia.
11. Stăncioiu,A., Şontea, S.,- Studies/investigations concerning wearning effect of the tools on the forces within the punching/stamping process , 02-04 september 2002, Vrnjacka Banja, Yugoslavia.
12. Cîrîţnă, L.M., Militaru, C., Rădulescu, C. - Study of compensation errors due totemperatures, as elements that are component of the chains of dimensions formed at assembly, 7th Youth Symposium on Experimental Solid Mechanics, Wojcieszyce, Poland 14-17mai, 2008.